



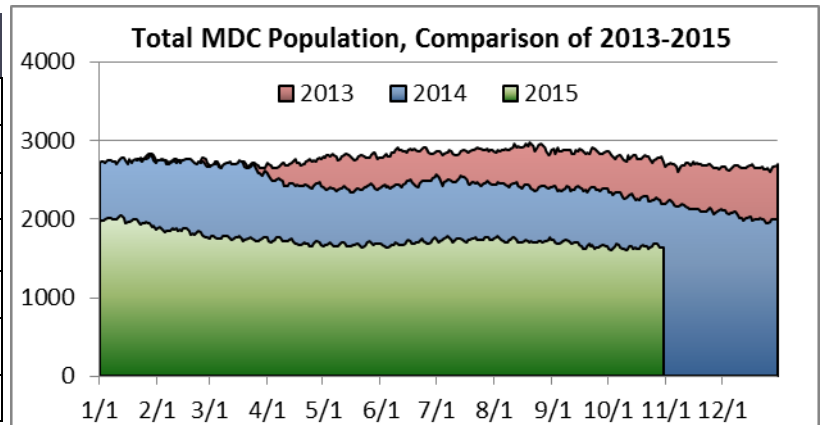
Bernalillo County Metropolitan Detention Center

Monthly Report for October 2015

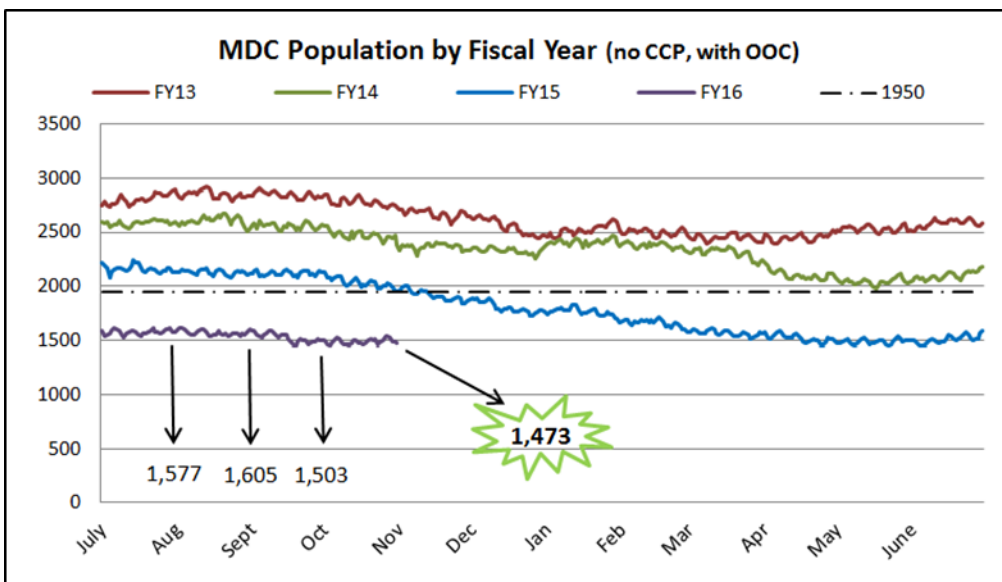
Report Date: November 7, 2015

The population of the Metropolitan Detention Center (MDC) has decreased overall. As of October 31, 2015 the population has decreased approximately 40% or 1,084 inmates since October 31, 2013.

Quick Figures for October	
	Average
On-Site Daily Population ¹ :	1,492
On-Site Male Population:	1,208
On-Site Female Population:	284
Community Custody Program (CCP):	147
Total Average Jail Population (with OOC & CCP):	1,639
Total Consecutive Days 1,950 or less:	354

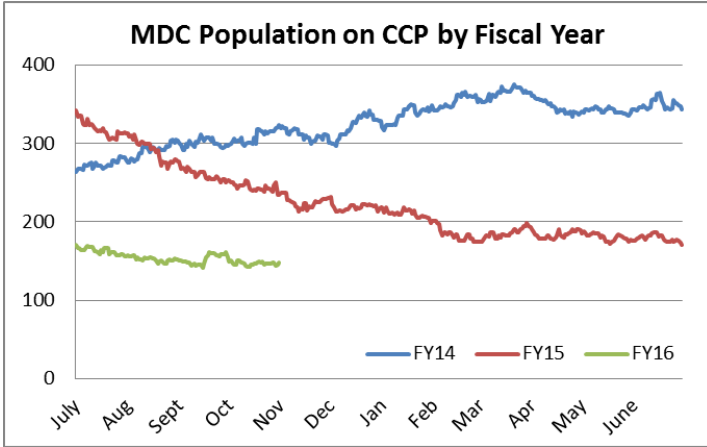


Criminal Justice Reforms Continue to Impact Jail Population



MDC actively collaborates with criminal justice partners to maintain the jail's population below 1,950². Criminal justice reforms continue to impact the jail population. Slight increases in the summer are typical based on seasonal trends seen in recent years.

Community Corrections Program



In March, 2014, CCP peaked at 376. As of October 31, 2015, CCP was 148. This is a decrease of 53.4%².

In March, 2014, inmates on CCP comprised 14.2% of the overall MDC population. On October 31, 2015, just over 9% of the MDC population was on CCP, approximately 5.1% less.

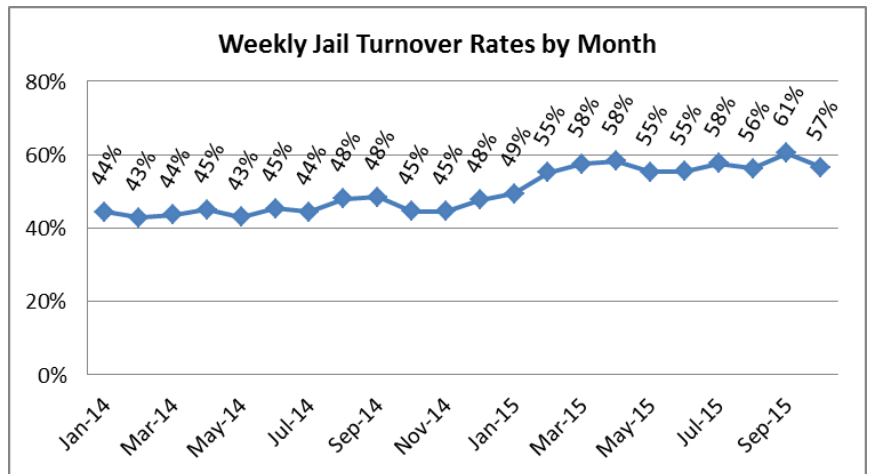
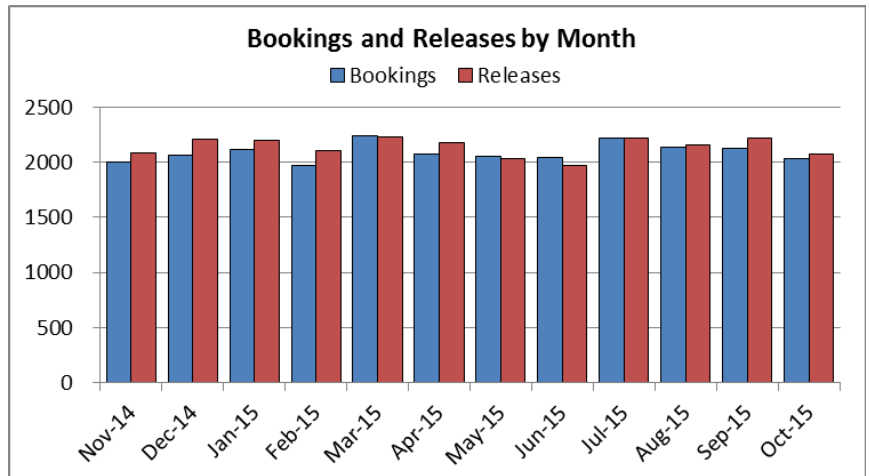
Bookings and Jail Turnover

Annual bookings by fiscal year have declined since FY08. This reduction does not correspond with the overall decreasing population trends in recent months. Monthly bookings have remained relatively stable over the last year.

The jail population reduction cannot be explained by the decrease in bookings alone. Jail population is driven by both admissions into the jail as well as the length of stay (LOS).

Jail turnover—which is calculated based on bookings, releases, and the average daily population—helps to demonstrate how quickly individuals are cycling through the jail. The turnover rate has increased in recent months, reflecting the decreasing size of the jail population and a decreasing length of stay as compared to previous years. [The length of stay \(LOS\) for October 2015 was 24 days, approximately 39% lower than for the LOS in September 2014 of 39 days.](#)

Court initiatives are helping to increase turnover at MDC by improving efficiency in the criminal justice system.



Criminal Justice Reform Initiatives

Since mid-March 2014, the County has partnered with the criminal justice family to design and implement numerous court initiatives aimed at creating efficiencies in the criminal justice system which have contributed to recent population reductions. The Criminal Justice collaborative continues to identify opportunities to realize additional efficiencies some of which will further impact the jail population.

Initiative Updates:

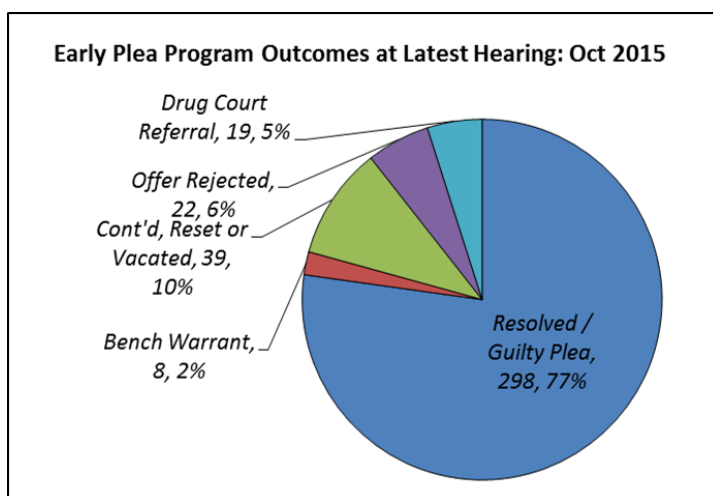
- Bernalillo County and City of Albuquerque Supportive Housing Program has received numerous referrals and continues to grow.
- Updated MDC Population study underway.
- Behavioral Health and Competency data analysis in progress,
- Integrated Criminal Justice Database initial discussion meetings.
- Safe Surrender Program discussions have begun.

ADA Case Resolution

- From October 14, 2014 through October 30, 2015, the ADA has resolved approximately **2,680** cases for at least **1,813** people⁴.
- 1 in 4 individuals with resolved cases had more than one case and these were often resolved on the same day.
- These resolutions were almost exclusively for criminal and traffic cases.
- A 16 week sample beginning April 2014 (one day per week) was previously collected for custody arraignments. For non-DV and DW cases, the resolution rate was 37.8%.
- All available dockets were reviewed (just over half of the dockets since the new ADA started) and resolved cases for those dates were reviewed. On those dates, for non-DV and DW cases, the resolution rate was 52% AND there were 122 cases resolved not on the docket. **The ADA resolution rate is 14.2% higher than the 2014 sample of similar cases.**

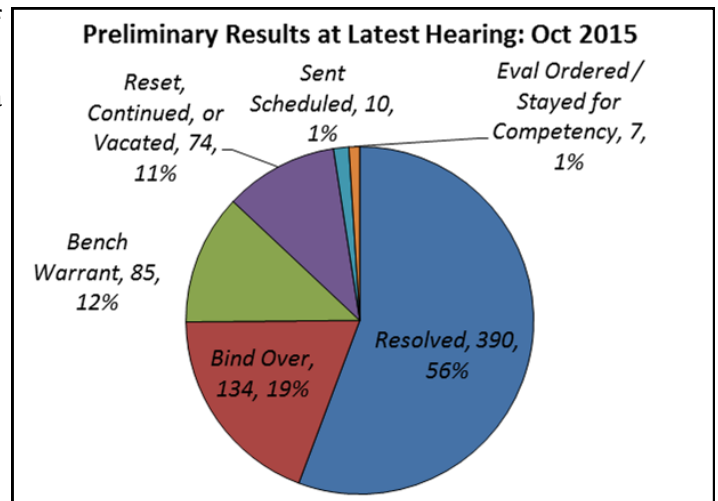
Early Plea Program

- While the Early Plea Program (EPP) was only recently expanded, early hearing results are promising. From March 23, 2015 and October 27, 2015, 437 hearings were scheduled for 376 cases.
- At the latest hearing for the cases, 77% of the cases were resolved (either sentenced or nolle pros) or the defendant had pled guilty.
- Of the 298 cases resolved to date, 271 (90.9%) were resolved at the first EPP hearing.



Preliminary Hearings

- Between June 23, 2014 and October 26, 2015, a total of 1,210 hearings were scheduled for 704 cases (cases were at times reset and hearings for the same case for a separate incident were considered unique).
- At the latest hearing for the cases, approximately **56%** were resolved at the preliminary hearing. Outcomes⁴ such as the scheduling of a sentencing hearing will likely result in an upcoming resolution.
- Of the **390 cases that have been resolved** to date, 317 (81.3%) were resolved within one or two hearings.

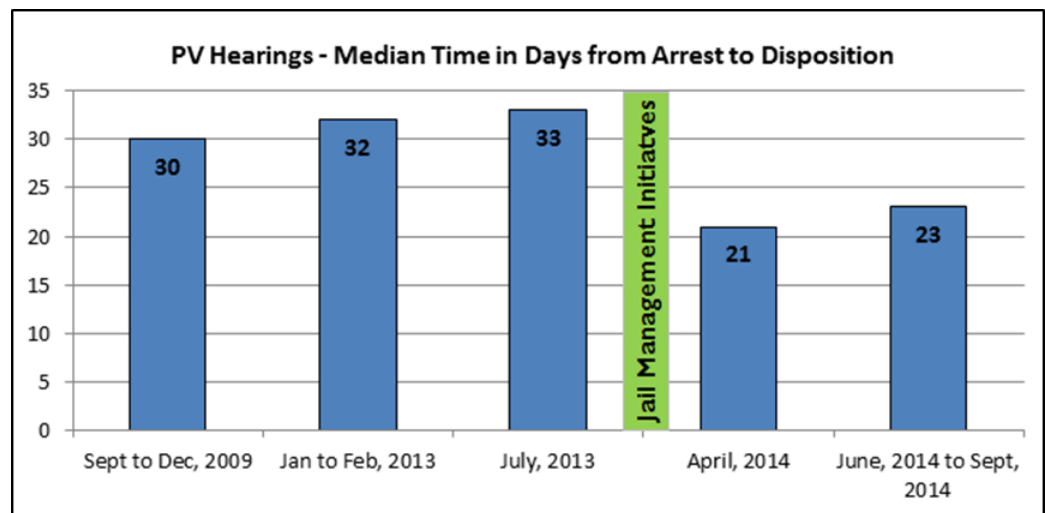


Probation Violation Hearings

Several initiatives that were implemented for PV hearings improved case processing time and length of stay (LOS). In recent months due in part to changes in court scheduling procedures, the LOS has increased as well as the time necessary for an individual to have their first hearing and the time to dispose of cases.

Despite these changes, the median⁵ number of days from arrest to disposition remains lower than in previous samples⁶.

The time from arrest to disposition has been 21 days in April 2014 and 23 in the ongoing sample beginning June 2014 compared to between 30 and 33 days in previous samples.



NOTES

1. Total male and female added will not always equal the total onsite population. The headcounts include the infirmary, which includes males and females.
2. The figure does include those who are housed Out of County (OOC) as the County's goal is to achieve the 1,950 without housing inmates out of county.
3. One potential reason for the decrease is the MOU that was implemented in March 24, 2014, a new MOU which prohibits participation on CCP for individuals with certain charges.
4. Some of the previous outcomes provided were for sentencing hearings for the cases in question. These were removed and are no longer included in the current tallies. In addition, resets after a guilty plea were not included, as a plea was already made but the sentencing was upcoming on the case.
5. The median value for time from arrival to hearing is used as it avoids skewing of the mean value due to probation violations that occur during incarceration, either in the MDC or on CCP, as well as those for which an individual is not booked into MDC.
6. Previous samples came from multiple sources including Arrest Orders and DA PV Reopenings. The April 2014 sample was taken from the PV dockets and the PV hearings starting June of 2014 are the PV morning hearings from the court dockets.

For further information,
contact the Bernalillo County
Public Safety Division at
505-468-7008.

