



Bernalillo County Metropolitan Detention Center

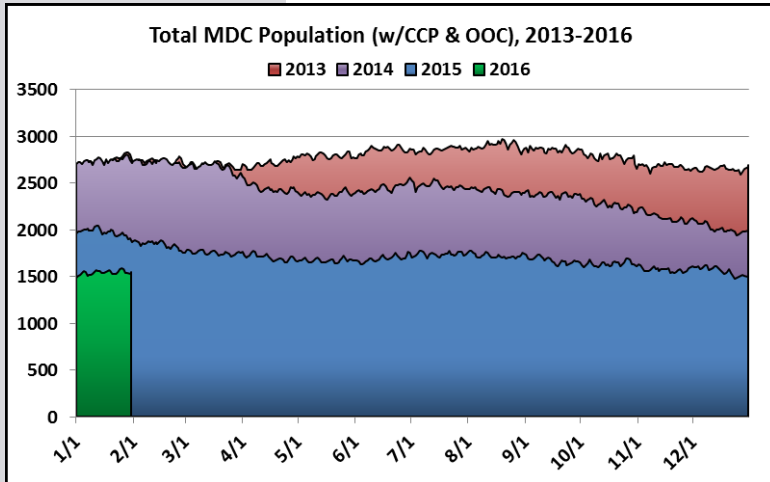


Monthly Report: January 2016

Report Date: February 25, 2016

Due to population decreases, the Metropolitan Detention Center:

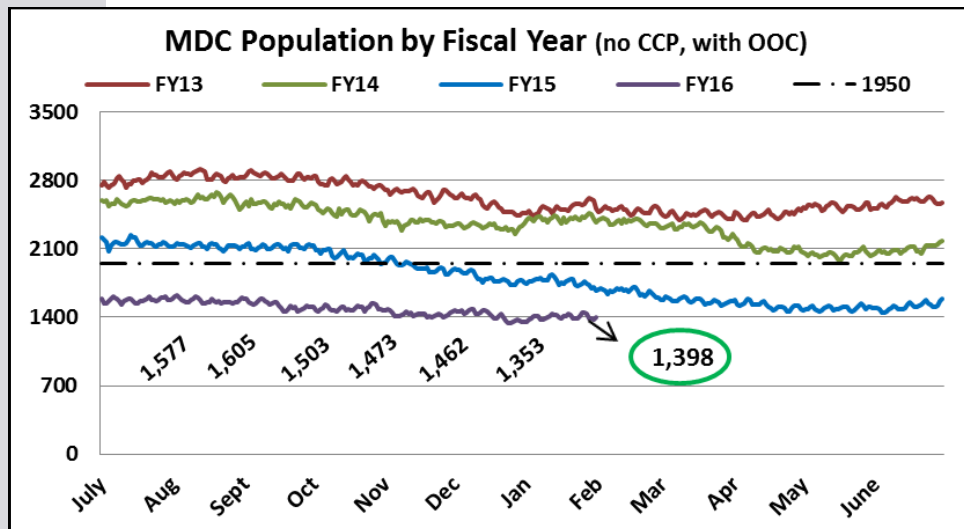
- Ceased all Out of County shipping in December 2014
- Closed 2 pods during 2015
- Has been at or below the 1,950 cap for 446 consecutive days



Quick Figures for January

	Average
On-Site Daily Population	1,403
On-Site Male Population	1,150
On-Site Female Population	254
Housed for DOC	18
Community Custody Program	146
Total Jail Population (w/OOC & CCP)	1,549
Total Consecutive Days 1,950 or Less	446

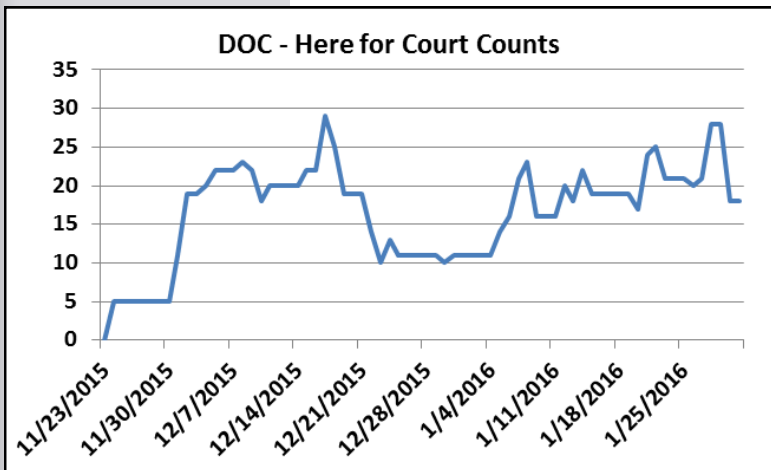
Criminal Justice Reforms and the Jail Population



MDC actively collaborates with criminal justice partners to maintain the jail's population below 1,950³. Criminal justice reforms continue to impact the jail population.

On January 31, 2016, the MDC population (not including CCP) was 16.2% or 271 inmates lower than the same day in 2015 and 40.9% or 969 lower than the same day in 2014. The MDC population with CCP on January 31, 2016 was 17.1% or 319 inmates lower than the same day in 2015 and 42.9% or 1,551 lower than the same day in 2014.

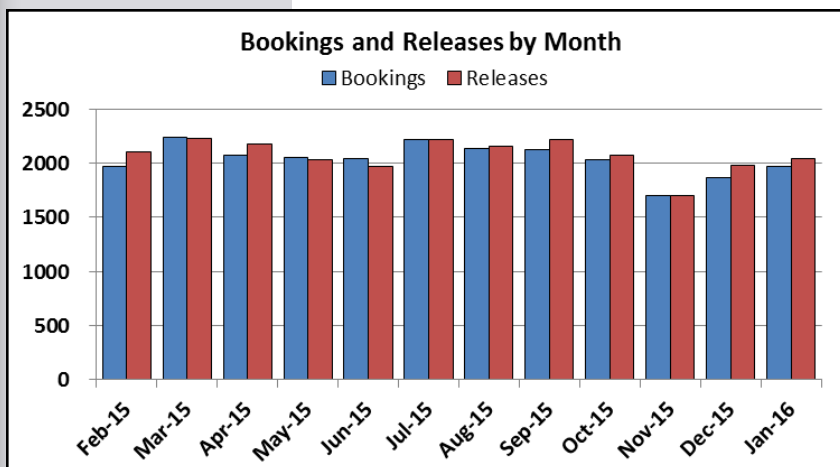
Department of Corrections—Here for Court



In November 2015, DOC changed its practice in transporting inmates throughout the state, resulting in a termination of an MOU with Bernalillo County. Inmates that would not normally be booked into MDC for hearings are currently being housed at the facility rather than being returned to the custody of DOC. Moving forward, MDC will temporarily house individuals who have been sentenced to DOC but also have cases pending in Bernalillo County. At this time, there has not been a significant impact on MDC's population, but Public Safety staff will continue to monitor and report on this group of inmates.

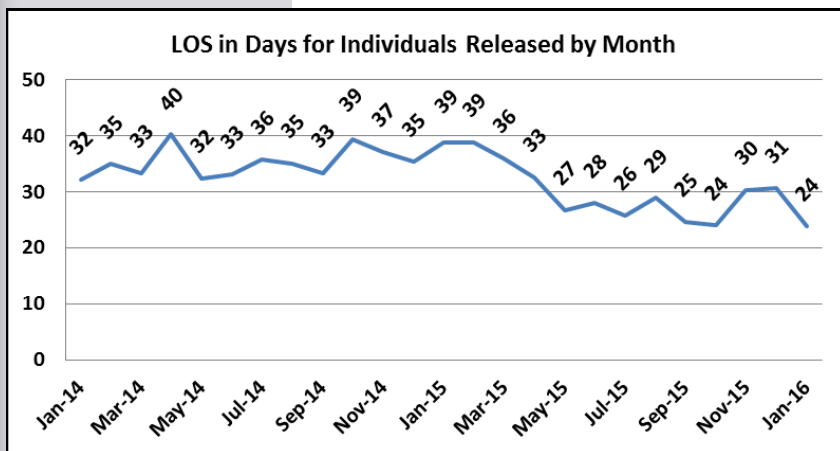
In January 2016, there were an average of 19 people per day housed at MDC rather than DOC due to this change. The length of stay of the inmates upon release averaged approximately 9.5 days and ranged from less than a day to 45 days.

Bookings, Releases, and Jail Turnover



Annual bookings by fiscal year have declined since FY08. This reduction does not correspond with the overall decreasing population trends in recent months. Monthly bookings have remained relatively stable over the last year. From December 2015 to January 2016, bookings increased by approximately 5.6% and releases increased by approximately 3.1%.

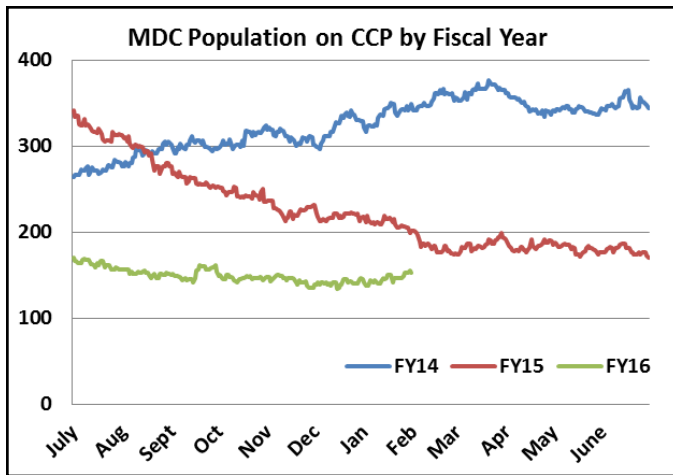
The jail population reduction cannot be explained by the decrease in bookings alone. Jail population is driven by both admissions into the jail as well as the length of stay (LOS).



[The length of stay \(LOS\) for January 2016 was 23.8 days, approximately 38.5% lower than for the LOS in January 2015 of 38.7 days.](#)

Court initiatives have helped to improve efficiency in the criminal justice system, improving turnover rates and LOS.

Community Corrections Program



In March, 2014, CCP peaked at 376. As of January 31, 2016, CCP was 151. This is a decrease of 59.8%⁴. The reason for this decline may be associated with the overall decrease in the MDC population resulting in less people in custody who qualify for CCP. Many individuals are now being diverted by the courts to Pretrial Services Supervision.

In March, 2014, inmates on CCP comprised 14.2% of the overall MDC population. On January 31, 2016, 9.9% of the MDC population was on CCP, approximately 4.3% less.

Criminal Justice Reform Initiatives

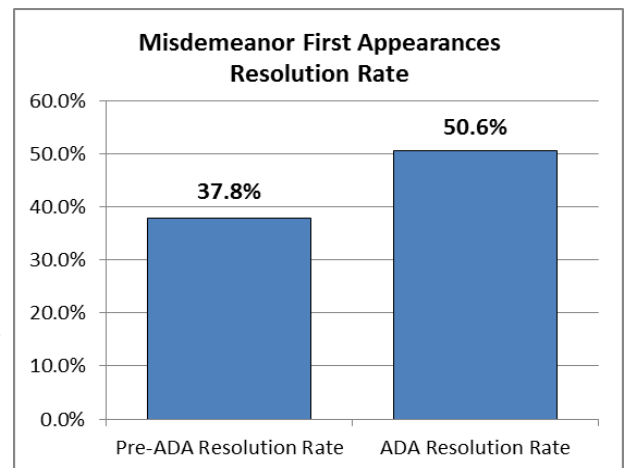
Since mid-March 2014, the County has partnered with the criminal justice family to design and implement numerous court initiatives aimed at creating efficiencies in the criminal justice system which have contributed to recent population reductions. Some of these initiatives include hiring a new ADA, implementation of preliminary hearings, and expansion of the Early Plea Program. The Criminal Justice collaborative continues to identify opportunities to realize additional efficiencies some of which will further impact the jail population.

Initiative Updates:

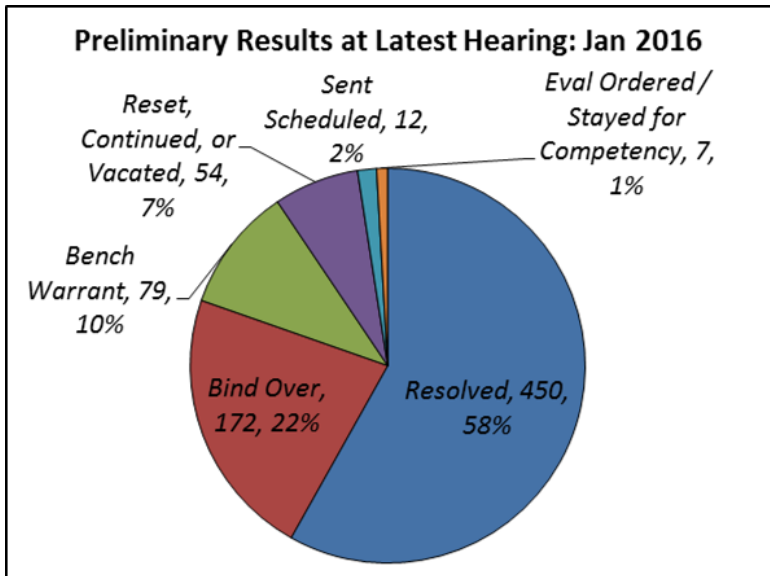
- * Behavioral Health and Competency data analysis in progress
- * Integrated Criminal Justice Database exploratory meetings continue.
- * Update MDC Population study underway.
- * Metropolitan Court and District Court working toward data sharing process to decrease redundancy and measure RAI outcomes.
- * Metropolitan Court is exploring options of implementing a court date reminder system possibly in early 2016.

ADA Case Resolution

- From October 14, 2014 through January 31, 2016, the ADA has resolved approximately **3,182** cases for at least **2,129** people.
- Approximately 1 in 4 individuals with resolved cases had more than one case and these were often resolved on the same day.
- These resolutions were almost exclusively for criminal and traffic cases.
- A 16 week sample beginning April 2014 (one day per week) was previously collected for custody arraignments. For non-DV and DW cases, the resolution rate was 37.8%.
- All available dockets were reviewed and resolved cases for those dates were reviewed. On those dates, for non-DV and DW cases, the resolution rate was 50.6% **AND** there were 136 cases resolved not on the docket. **The ADA resolution rate is 12.8% higher than the 2014 sample of similar cases.**



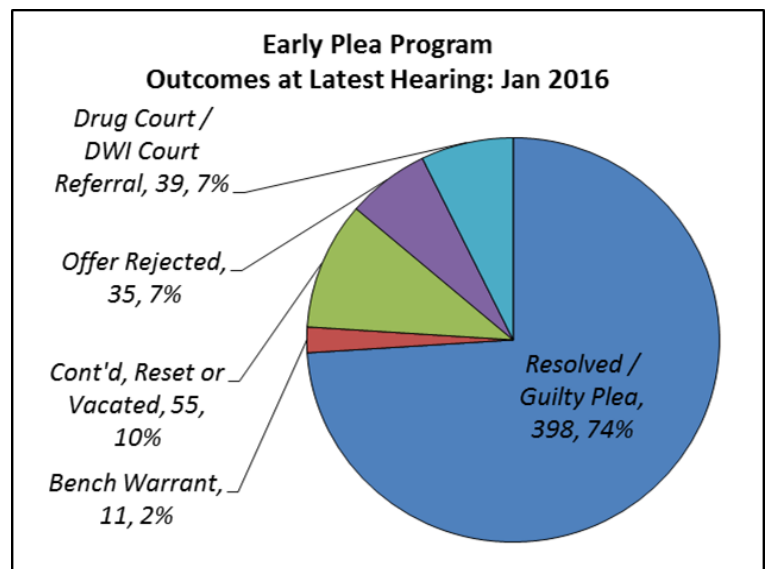
Preliminary Hearings



- Between June 23, 2014 and January 31, 2016, a total of 1,440 hearings were scheduled for 776 cases (cases were at times reset and hearings for the same case for a separate incident were considered unique).
- At the latest hearing for the cases, approximately **58%** were resolved at the preliminary hearing. Outcomes such as the scheduling of a sentencing hearing will likely result in an upcoming resolution.
- Of the **450 cases that have been resolved** to date, 345 (77%) were resolved within one or two hearings.

Early Plea Program

- From March 23, 2015 to January 31, 2016, 605 hearings were scheduled for 538 cases.
- At the latest hearing for the cases, 74% of the cases were resolved (either sentenced or nolle pros) or the defendant had pled guilty and was scheduled to be sentenced at a later date.
- Of the 398 cases resolved to date, 364 (91.5%) were resolved at the first EPP hearing.



NOTES

1. Total male and female added will not always equal the total onsite population. The headcounts include the infirmary, which includes males and females.
2. Due to DOC policy changes, the number of inmates housed at MDC from DOC has increased.
3. The figure does include those who are housed Out of County (OOC) as the County's goal is to achieve the 1,950 without housing inmates OOC.
4. One potential reason for the decrease is the MOU that was implemented in March 24, 2014, a new MOU which prohibits participation on CCP for individuals with certain charges.

For further information,
contact the Bernalillo
County Public Safety
Division at 505-468-7008.

