



Bernalillo County Metropolitan Detention Center

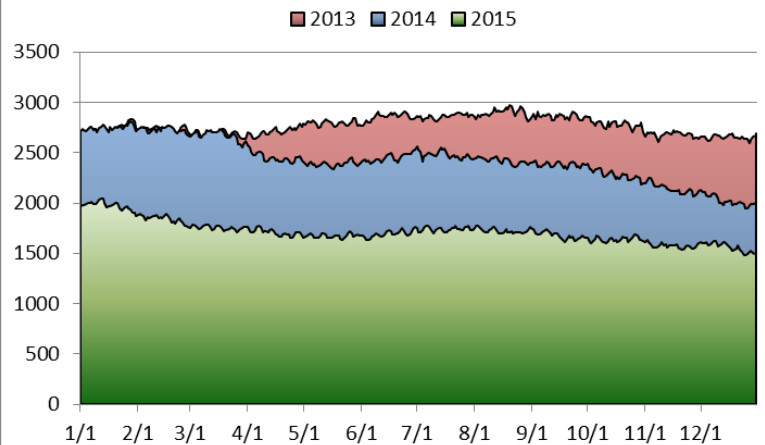
Monthly Report: December 2015

Report Date: January 12, 2016

Highlights

- During 2015, two pods at MDC were closed due to the decrease in the jail population.
- The MDC population on December 31, 2015 (including CCP) was 1,498. On the same day in 2013 the MDC population was 2,693. **This is a decrease of 1,195 inmates, or a 44.37% decrease in the population.**
- The in-custody population of MDC has been at or below the 1,950 cap for 415 consecutive days.
- Preliminary hearings—hearings early in the criminal justice process—were implemented in June of 2014 and continue to have a high resolution rate of 58%.
- The Early Plea Program was expanded in 2015. Program outcomes include a resolution or guilty plea in approximately 3 out of every 4 cases and the resolution typically occurs at the first hearing.
- The new ADA has maintained a resolution rate that is currently 12.6% higher than the resolution rate for earlier samples of similar cases and has also resolved an additional 133 cases not on the docket.

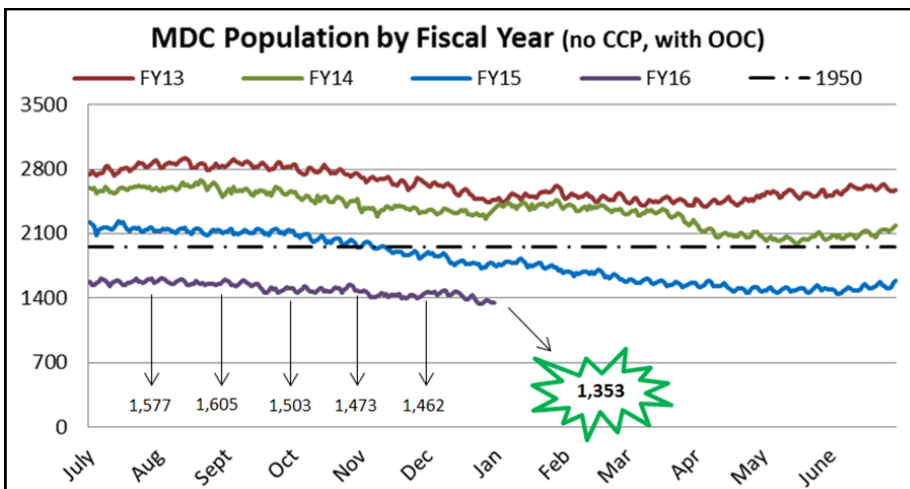
Total MDC Population (w/CCP & OOC): 2013-2015



Quick Figures for December

	Average
On-Site Daily Population ¹ :	1,418
On-Site Male Population:	1,154
On-Site Female Population:	264
Housed for DOC ²	18
Community Custody Program (CCP):	141
Total Jail Population (w/OOC & CCP):	1,559
Total Consecutive Days 1,950 or less:	415

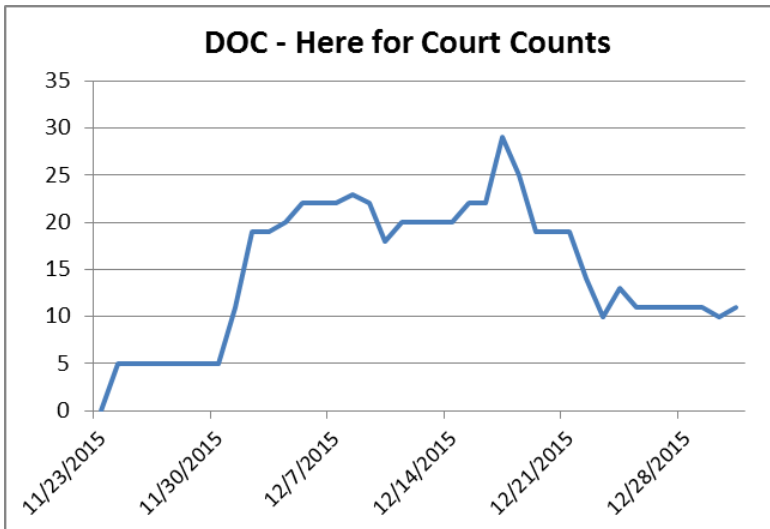
Criminal Justice Reforms Continue to Impact Jail Population



MDC actively collaborates with criminal justice partners to maintain the jail's population below 1,950³. Criminal justice reforms continue to impact the jail population.

On December 31, 2015, the MDC population (not including CCP) was 23.1% or 407 inmates lower than the same day in 2014 and 42.8% or 1,011 lower than the same day in 2013.

Department of Corrections—Here for Court



In November 2015, DOC changed its practice in transporting inmates throughout the state, resulting in a termination of an MOU with Bernalillo County. Moving forward, MDC will temporarily house individuals who have been sentenced to DOC but also have cases pending in Bernalillo County. At this time, there has not been a significant impact on MDC’s population, but Public Safety staff will continue to monitor and report on this group of inmates.

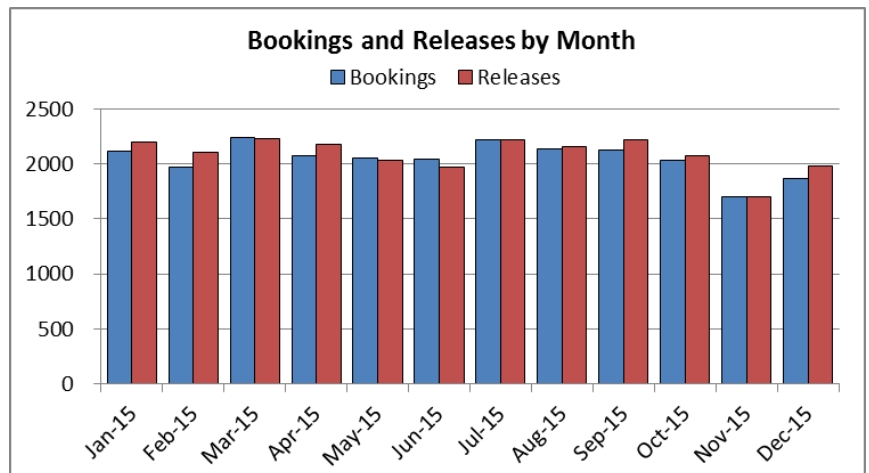
In December 2015, there were an average of 18 people per day housed at MDC rather than DOC due to this change.

The length of stay of the inmates upon release averages approximately 8.5 days and can range from part of a day to several weeks.

Bookings and Jail Turnover

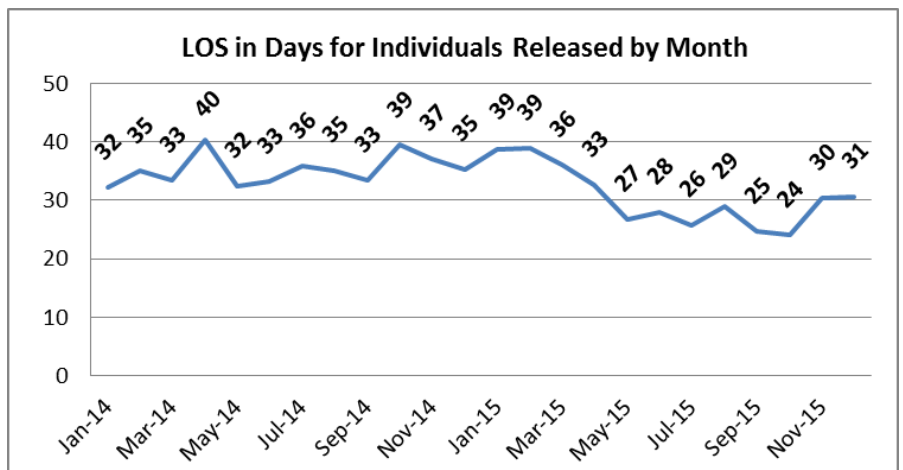
Annual bookings by fiscal year have declined since FY08. This reduction does not correspond with the overall decreasing population trends in recent months. Monthly bookings have remained relatively stable over the last year. From November 2015 to December 2015, bookings increased by approximately 10.1% and releases increased by approximately 16.6%.

The jail population reduction cannot be explained by the decrease in bookings alone. Jail population is driven by both admissions into the jail as well as the length of stay (LOS).

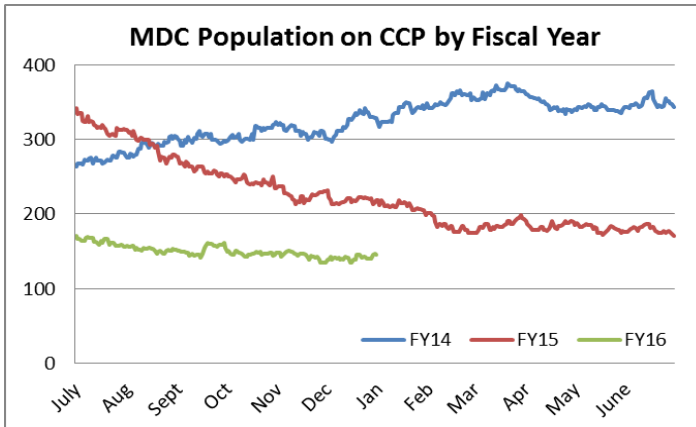


[The length of stay \(LOS\) for December 2015 was 30.6 days, approximately 13.3% lower than for the LOS in December 2014 of 35.3 days.](#)

Court initiatives have helped to improve efficiency in the criminal justice system, improving turnover rates and LOS.



Community Corrections Program



In March, 2014, CCP peaked at 376. As of December 31, 2015, CCP was 145. This is a decrease of 61.4%⁴. The reason for this decline may be associated with the overall decrease in the MDC population resulting in less people in custody who qualify for CCP. In addition, the courts may be diverting more pretrial individuals to Pretrial Services for supervision.

In March, 2014, inmates on CCP comprised 14.2% of the overall MDC population. On December 31, 2015, 9.7% of the MDC population was on CCP, approximately 4.5% less.

Criminal Justice Reform Initiatives

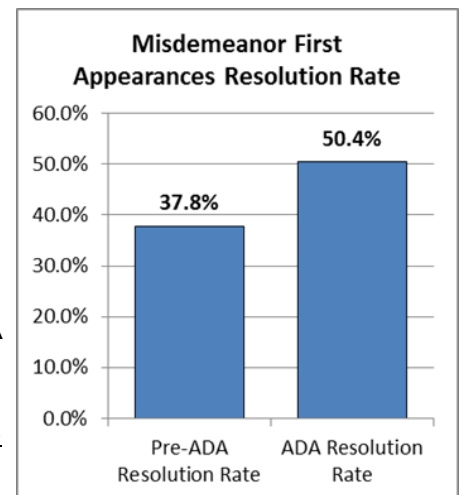
Since mid-March 2014, the County has partnered with the criminal justice family to design and implement numerous court initiatives aimed at creating efficiencies in the criminal justice system which have contributed to recent population reductions. The Criminal Justice collaborative continues to identify opportunities to realize additional efficiencies some of which will further impact the jail population.

Initiative Updates:

- Behavioral Health and Competency data analysis in progress,
- Integrated Criminal Justice Database exploratory meetings continue.
- Update MDC Population study underway.
- Metropolitan Court and District Court working toward data sharing process to decrease redundancy and measure RAI outcomes.
- District Court Pretrial Services is partnering with the Supportive Housing Program to provide specialized pretrial supervision for target population.
- Metropolitan Court is exploring options of implementing a court date reminder system possibly in early 2016.
- Albuquerque Police Department working to add additional contact information to citation and charging forms to assist in court date reminders.

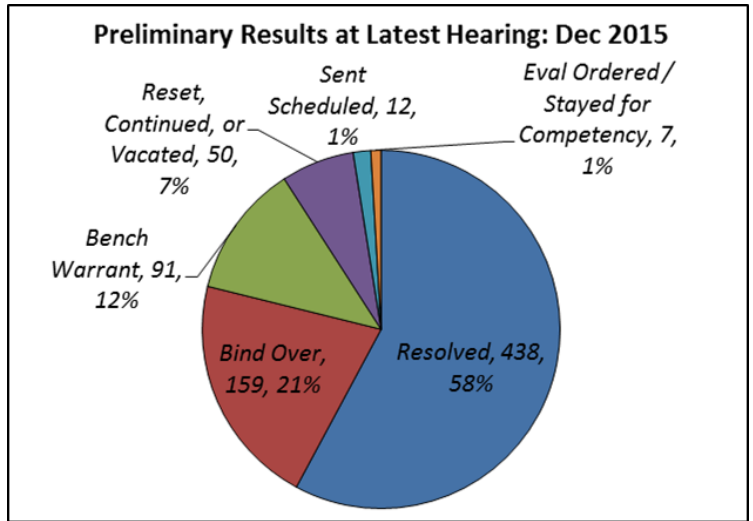
ADA Case Resolution

- From October 14, 2014 through December 31, 2015, the ADA has resolved approximately **2,998** cases for at least **2,009** people⁴.
- Approximately 1 in 4 individuals with resolved cases had more than one case and these were often resolved on the same day.
- These resolutions were almost exclusively for criminal and traffic cases.
- A 16 week sample beginning April 2014 (one day per week) was previously collected for custody arraignments. For non-DV and DW cases, the resolution rate was 37.8%.
- All available dockets were reviewed (just over half of the dockets since the new ADA started) and resolved cases for those dates were reviewed. On those dates, for non-DV and DW cases, the resolution rate was 50.4% **AND** there were 133 cases resolved not on the docket. **The ADA resolution rate is 12.6% higher than the 2014 sample of similar cases.**

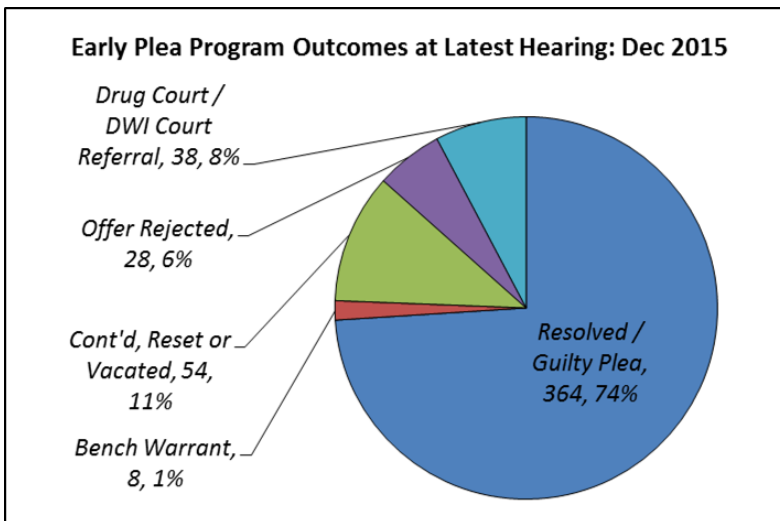


Preliminary Hearings

- Between June 23, 2014 and December 31, 2015, a total of 1,390 hearings were scheduled for 759 cases (cases were at times reset and hearings for the same case for a separate incident were considered unique).
- At the latest hearing for the cases, approximately **58%** were resolved at the preliminary hearing. Outcomes³ such as the scheduling of a sentencing hearing will likely result in an upcoming resolution.
- Of the **438 cases that have been resolved** to date, 339 (77%) were resolved within one or two hearings.



Early Plea Program



- From March 23, 2015 to December 31, 2015, 552 hearings were scheduled for 492 cases.
- At the latest hearing for the cases, 74% of the cases were resolved (either sentenced or nolle pros) or the defendant had pled guilty and was scheduled to be sentenced at a later date.
- Of the 364 cases resolved to date, 334 (91.7%) were resolved at the first EPP hearing.

NOTES

1. Total male and female added will not always equal the total onsite population. The headcounts include the infirmary, which includes males and females.
2. Due to DOC policy changes, the number of inmates housed at MDC from DOC has increased.
3. The figure does include those who are housed Out of County (OOC) as the County's goal is to achieve the 1,950 without housing inmates out of county.
4. One potential reason for the decrease is the MOU that was implemented in March 24, 2014, a new MOU which prohibits participation on CCP for individuals with certain charges.
5. Some of the previous outcomes provided were for sentencing hearings for the cases in question. These were removed and are no longer included in the current tallies. In addition, resets after a guilty plea were not included, as a plea was already made but the sentencing was upcoming on the case.

For further information, contact the Bernalillo County Public Safety Division at 505-468-7008.

