

**Bernalillo County Criminal Justice
Review Commission
Metropolitan Detention Center Population**

Paul Guerin Ph.D., Institute for Social
Research, University of New Mexico

August 29, 2013
State Bar Conference Center

Who's in Jail Nationally?

- After three years of decline the number of persons confined in county and city jails increased 1.2% to 753,447 at midyear 2012.
- Local jails operated at about 84% of their rated capacity as of June 30, 2012. This was the lowest percent since 1984.
- Jail jurisdictions holding 1,000 or more inmates reported the highest percentage of occupied bed space of 89% at midyear 2012.
- At mid-year 2011 there were 1,598,780 prisoners in state and federal correctional facilities.

Jail Populations Nationally

	Population	ADP	Rated	%
Jurisdiction	2010	2010	2010	2010
Los Angeles County, CA	16,862	18,036	18,112	93.1
New York City, NY	12,745	13,049	19,404	65.7
Harris County, TX	10,264	10,242	9,391	109.3
Cook County, IL	9,777	9,586	10,607	92.2
Philadelphia City, PA	8,325	8,804	8,685	95.9
Maricopa County, AZ	7,549	8,055	9,395	80.4
Bernalillo County, NM	2,688	2,689	2,236	120.2

MDC is the 48th largest jail in rated capacity

Who's in Jail in New Mexico

New Mexico Local Jail Population: 6,583 (June 30, 2011) (7,783 with Federal and ICE prisoners). There are 29 detention facilities in New Mexico with a design capacity of approximately 8,680. New Mexico detentions centers were at 87.0% of design capacity on June 30, 2011.

Jails

Jails in the United States operate under the authority of local or federal government. Entities such as cities, counties, and towns operate jails under local government authority, and the Federal Bureau of Prisons operates jails under federal government authority.

Jails

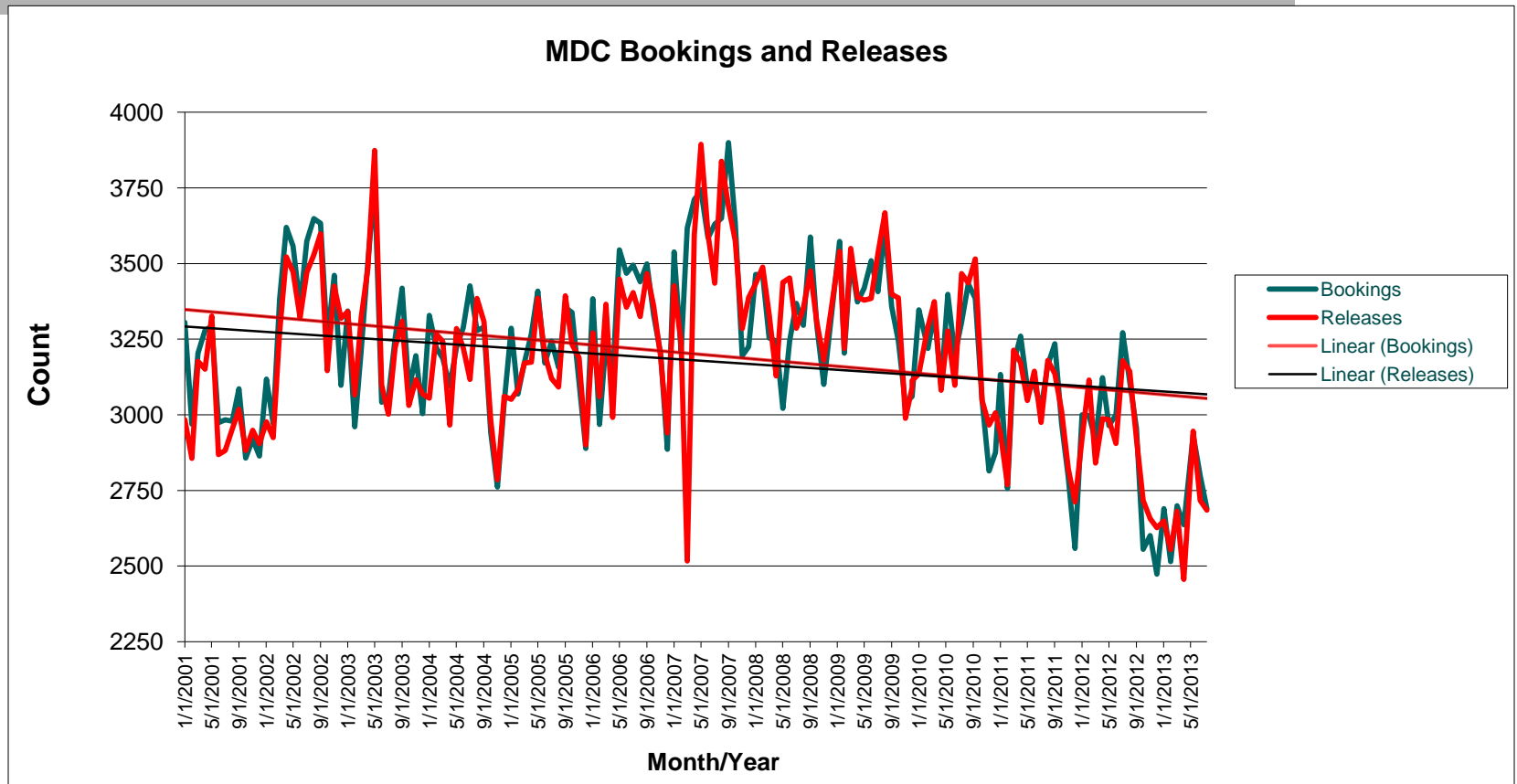
Jails hold pre-trial detainees, sentenced misdemeanants, in some cases sentenced felons, sentenced felons awaiting transfer to a state facility, and probation and parole violators.

Jail Population

Jail population is impacted by two factors:

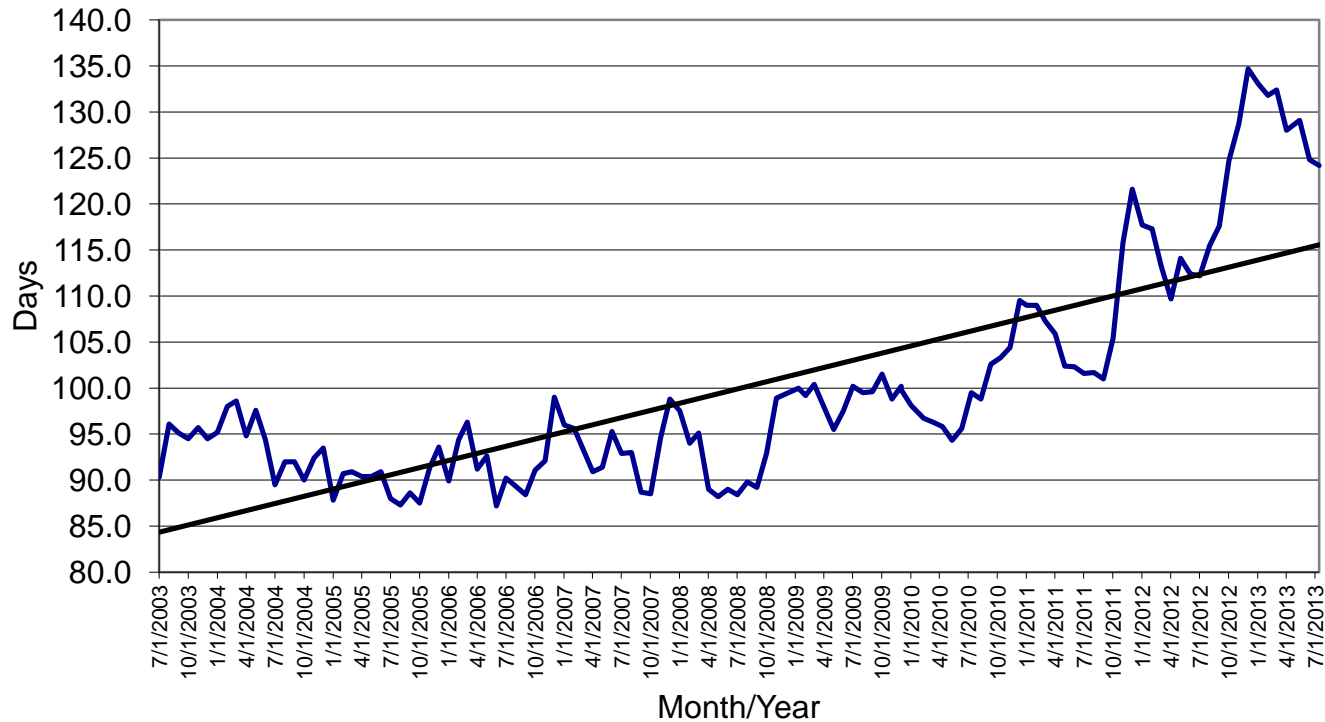
1. Admissions
2. Length of Stay

MDC Population



MDC Population

MDC In-Custody Monthly Average Length of Stay in Days

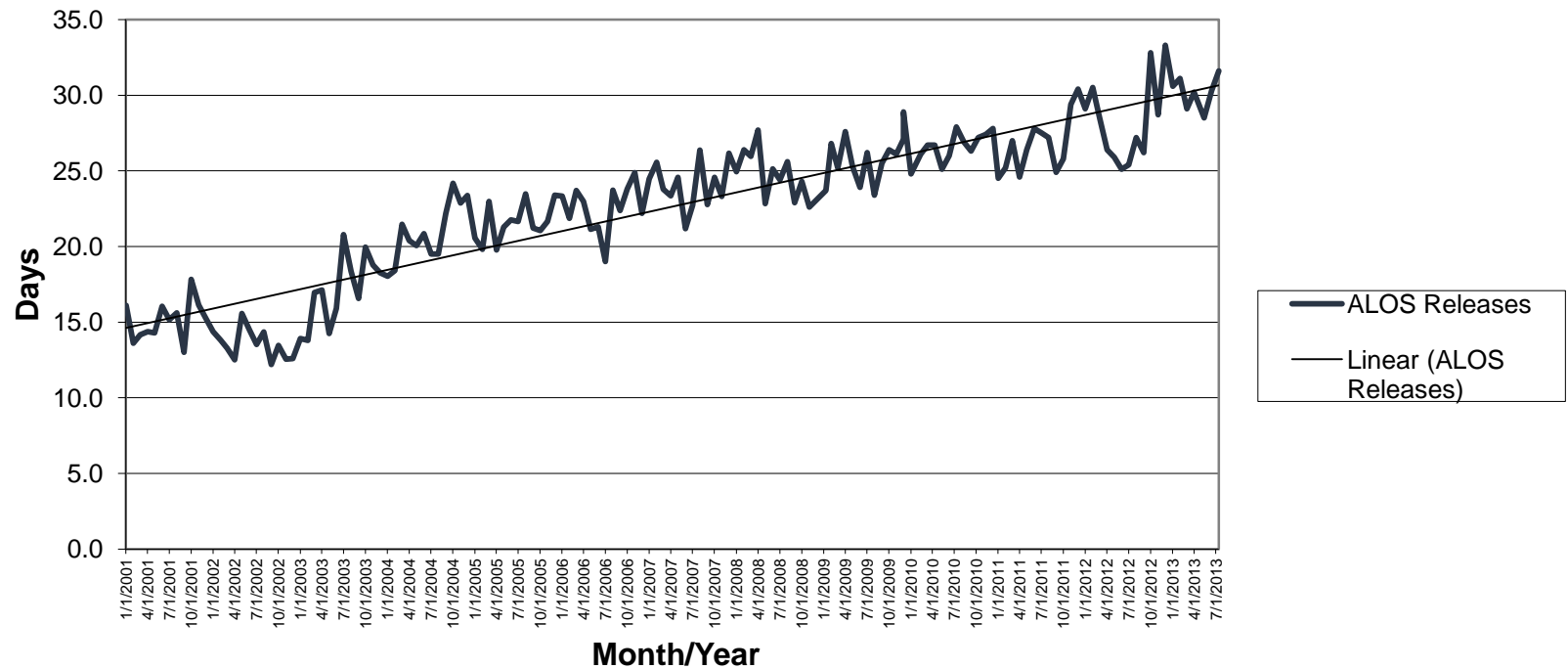


— ALOS Custody

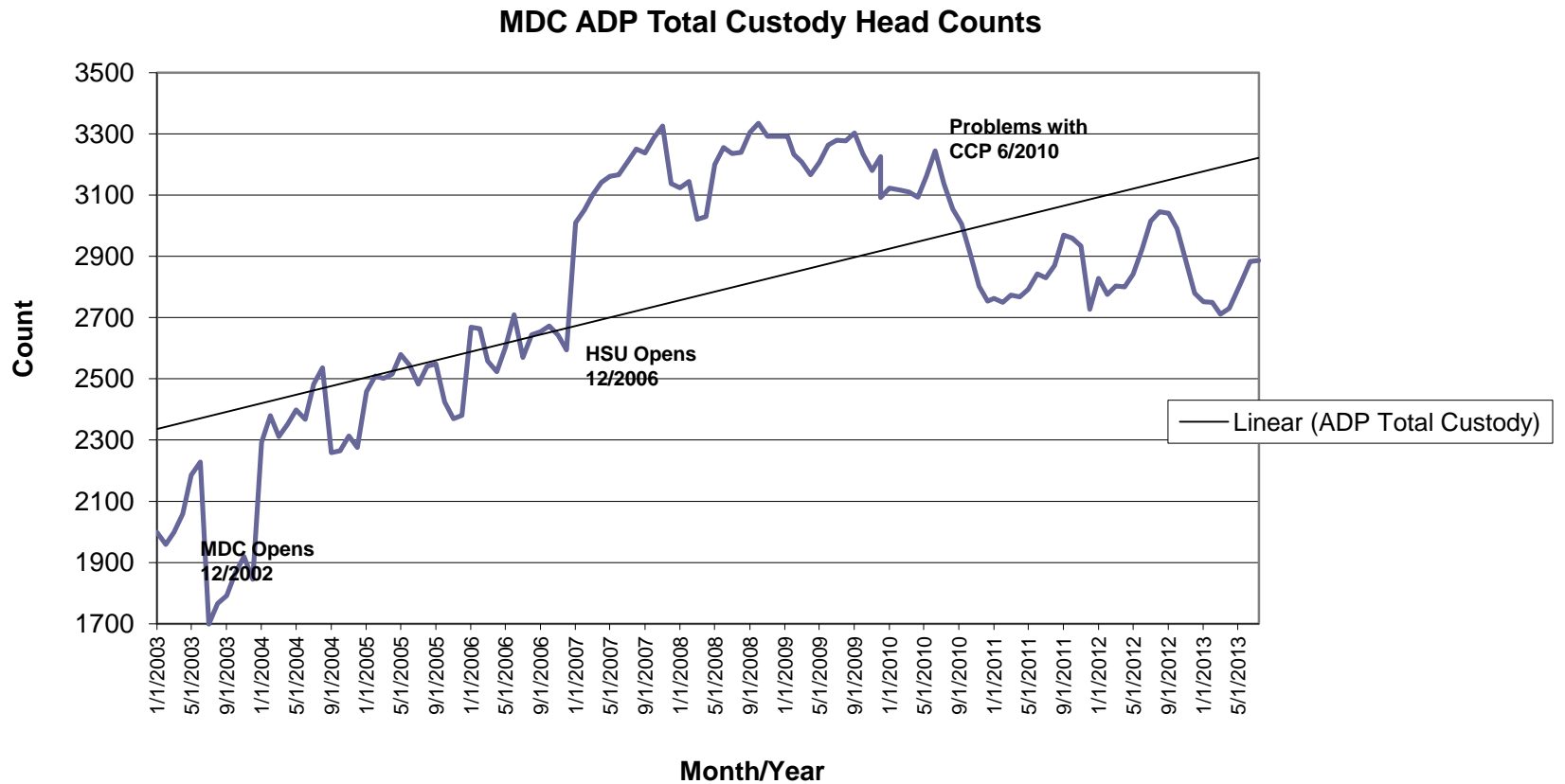
— Linear (ALOS Custody)

MDC Population

MDC Releases Average Length of Stay in Days

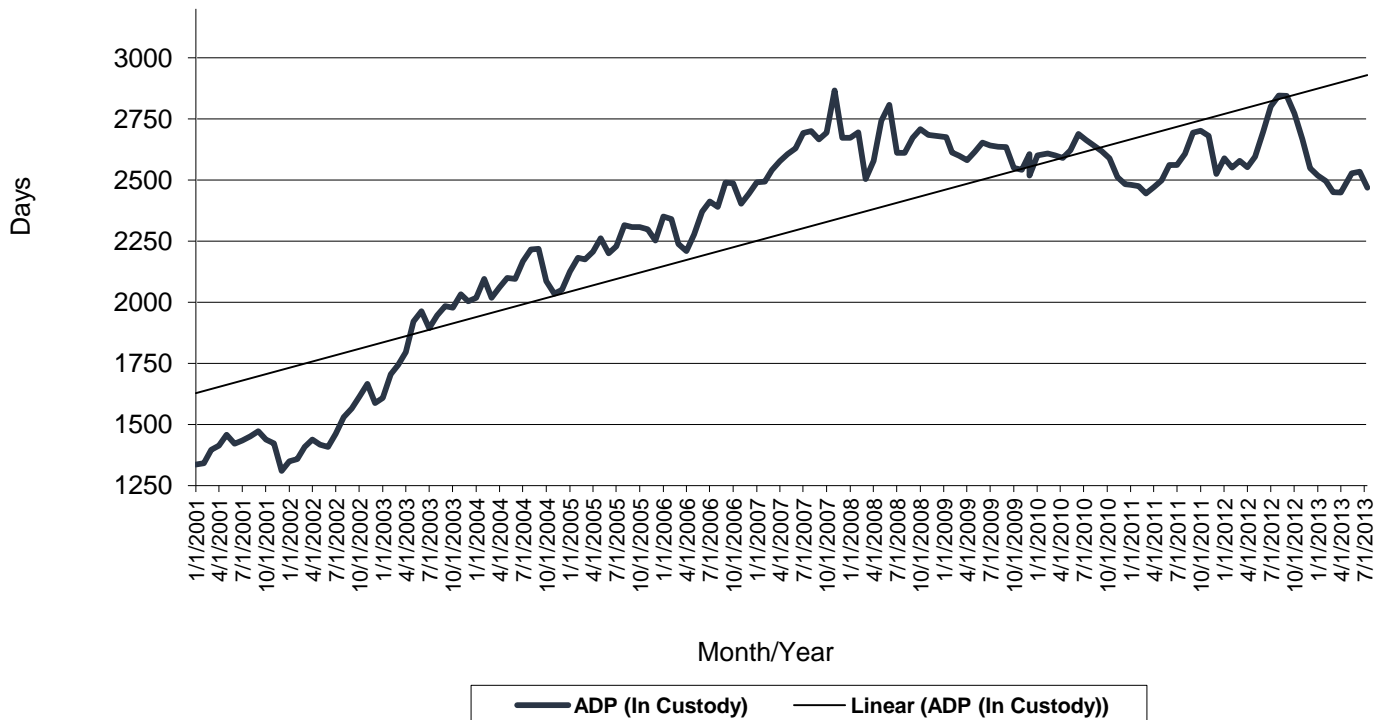


MDC Population



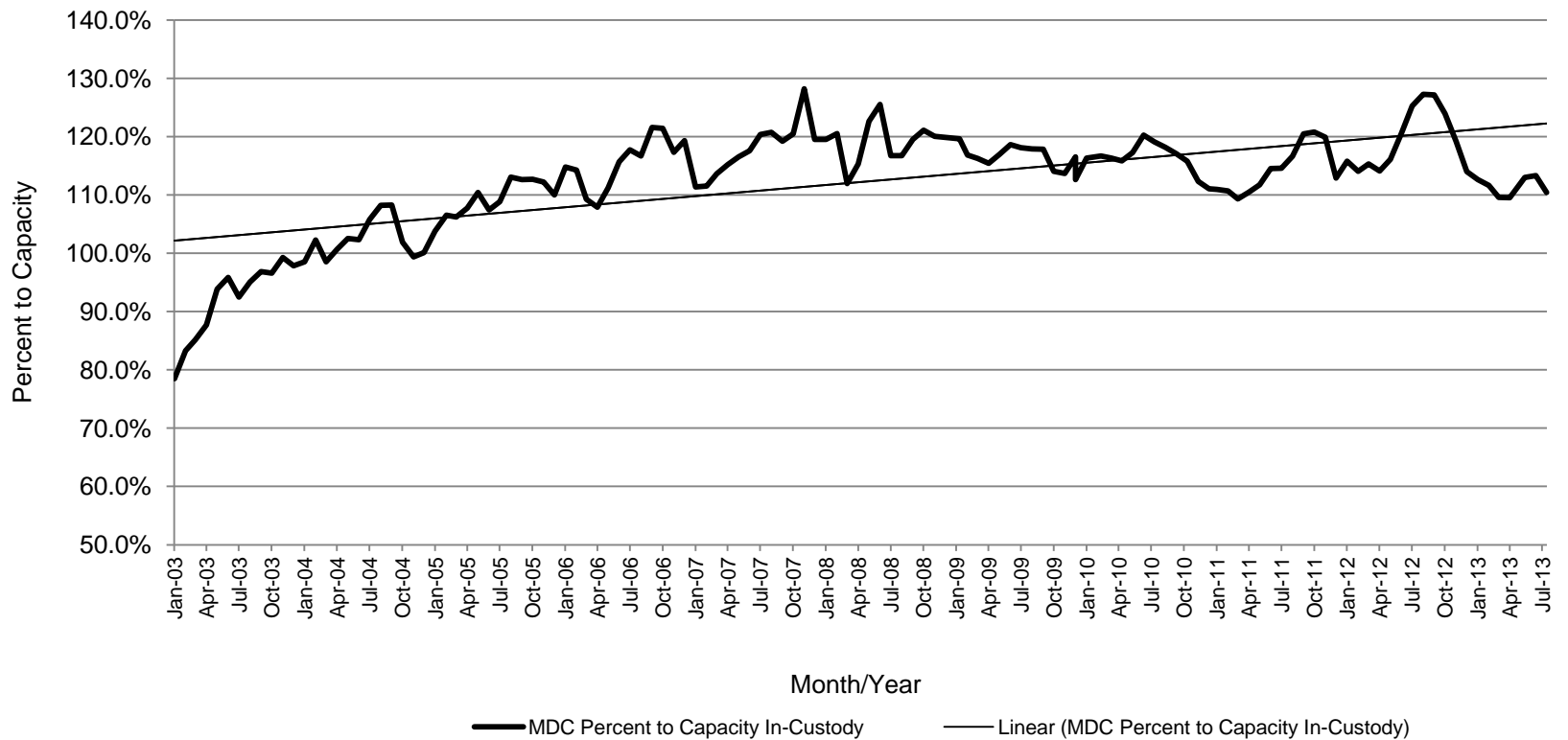
MDC Population

MDC In-Custody Average Monthly Population

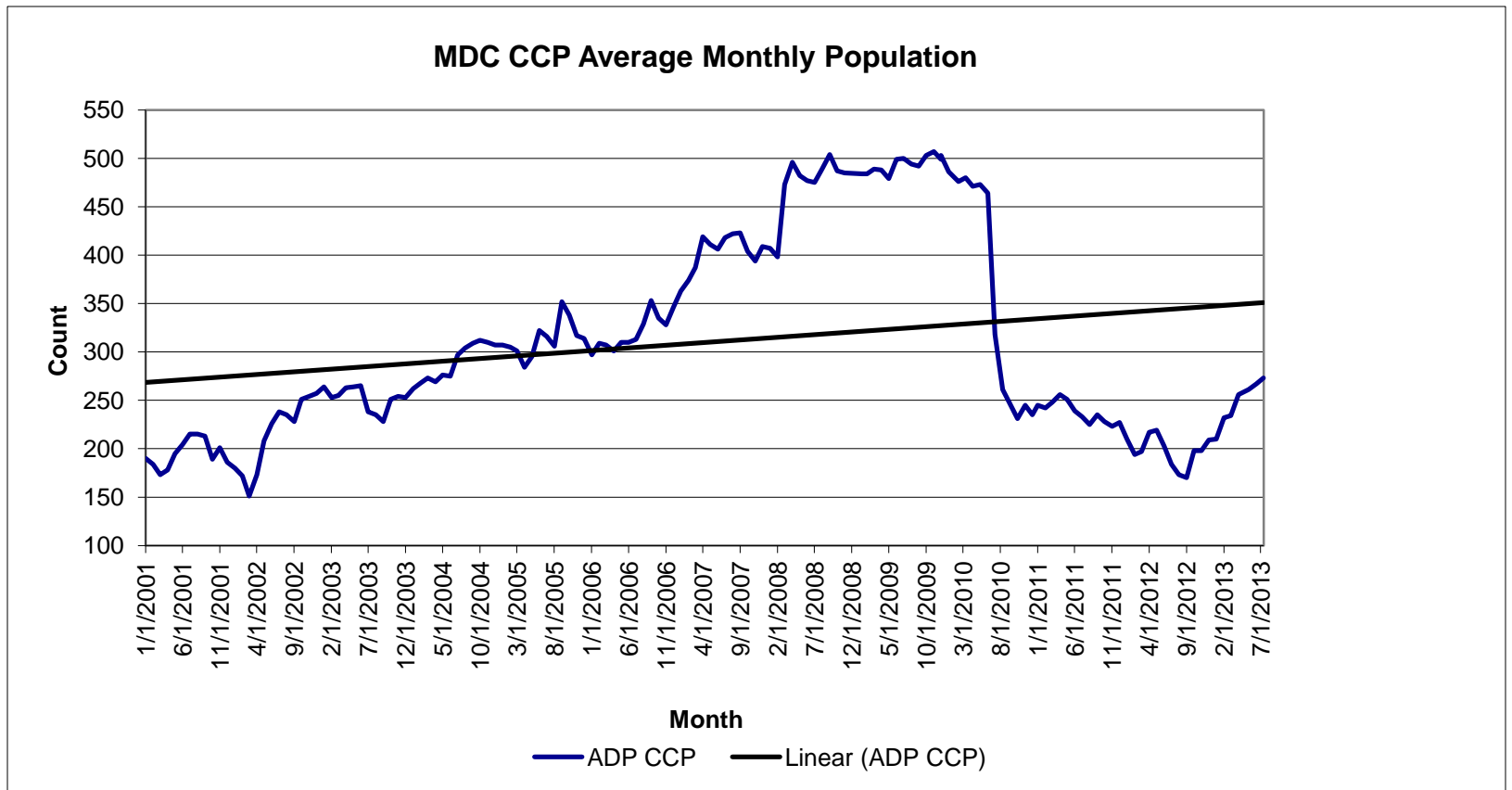


MDC Population

MDC In-Custody Average Monthly Population Percent to Capacity In-Custody



MDC Population



MDC Population

August 29, 2013 7:00 a.m. Head Count		
	Beds	Count
MDC Custody Count	-	2,759
MDC In-House	1,984	1,885
MDC HSU	176	91
MDC Infirmary	18	13
MDC RDT	-	16
MDC Hospital	-	6
MDC Out of County	-	443
MDC CCP	-	305

Percent to Capacity: 91.5% (based on design capacity of 2,236)

MDC Population

August 29, 2013 7:00 a.m. Head Count					
	Population In-Custody		MDC Beds		Percent to Operational Capacity
Gender	Count	Percent	Count	Percent	Percent
Male	1,614	81.1%	1,822	83.9%	88.6%
Female	375	18.9%	350	16.1%	107.1%
Total	1,989	100.0%	2,172	100.0%	91.5%

MDC Population

April 1, 2013

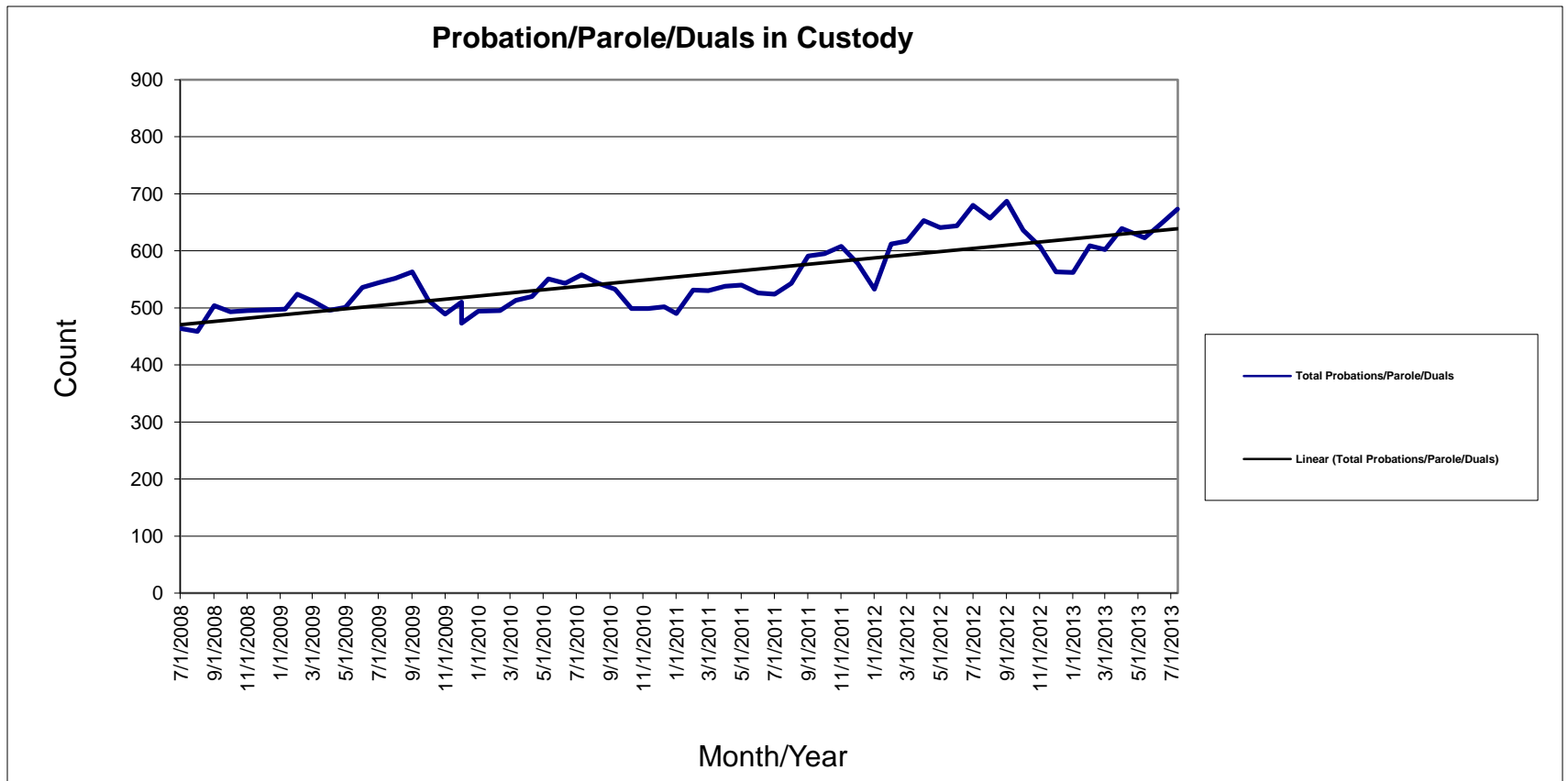
	Count	Percent of In-House Population
Psychiatric Services Unit Caseload	837	34.1%
MDC Population	2,457	100.0%

MDC Population

Who's in Jail in Bernalillo County

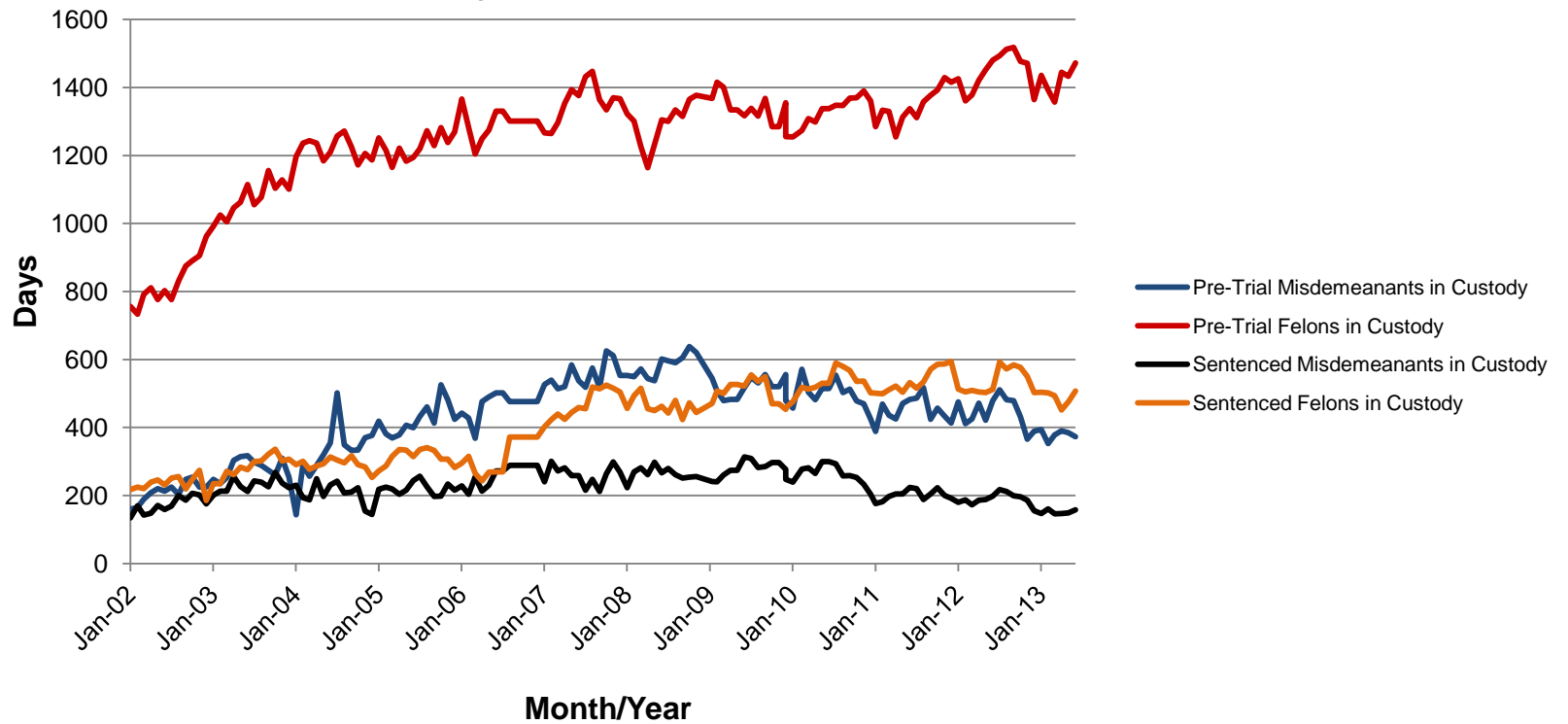
- In the MDC in 2003, 75% of male arrestees and 74% of female arrestees who participated in the ADAM program tested positive for any drug. Further, of those testing positive it was estimated that 41% of males and 44% of females were at risk for drug dependence.
- In the MDC in 2003 approximately 30% of all arrestees who participated in the ADAM program were estimated to be at risk for drug dependence.

MDC Population



MDC Population

MDC - Type of Arrestees



MDC Population

MDC Bookings by Type

